



Eagle News

*THE MAGICAL WORLD OF
LEARNING*

12.19.2024

Wishing a joyful holiday season to all students and families! The winter program for kindergarten through 2nd grade was truly spectacular, spreading cheer and delight. Holiday festivities are in full swing throughout the campus, creating a magical atmosphere for everyone. Happy New Year to the wonderful community of Glover Elementary!

Upcoming Events:

Dec. 23rd- Jan. 8th- No School Winter Break
Jan.9th- Welcome Back Bash For
Parents/Guardians and Students Return From
Winter Break

What's In This Week's Issue?

- Upcoming Events for 2025
- FBISD Parent Resources Links
- Family Resource Center Updates
- Brighter Bites
- Family Tips From our Practical Parent Education Curriculum
- And much more...!

**Happy
Holidays**



Read More Comics On
[Houstonchronical.com/comics](https://houstonschronical.com/comics)

The Magic Continues Online

Visit the [Parent and Family Center webpage](#) for:

- Event Information
- Family Courses
- Grade Level compacts
- Campus Policy
- Brighter Bites FREE Nutritional Packs
- And More!



FBISD Parent Links & Resources

- [Glover PTO Newsletter](#)
- [Volunteer Background Check](#)
- [GE Parent/Student Handbook](#)
- [Free and Reduced Lunch Application](#)
- [Parent Resources](#)
- [GE Twitter](#)
- [GE Website](#)
- [FBISD 24-25 Calendar](#)
- [Student Code Of Conduct](#)
- [GT Newsletter](#)
- [FBISD Express Newsletter](#)

Contact Us

Principal Arana
clementine.arana@fortbendisd.gov

Assistant Principal Allen
carissa.allen@fortbendisd.gov

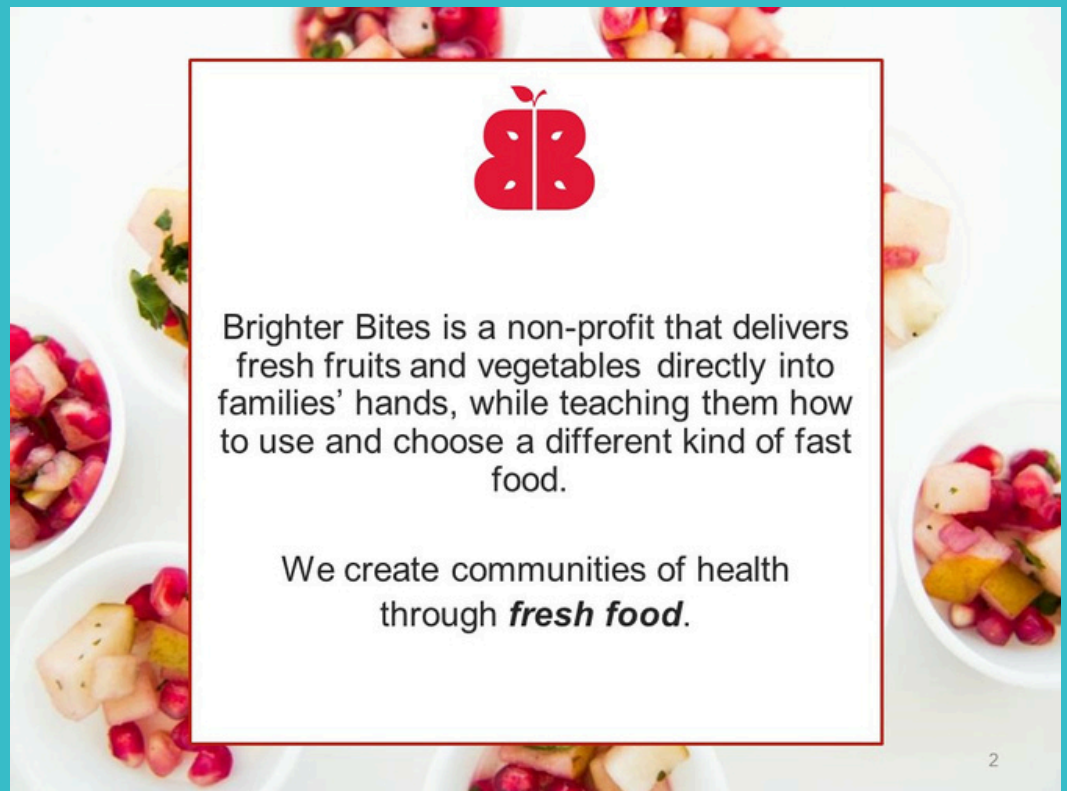
Parent Educator Jade Claborn
Jade.Claborn@fortbendisd.gov



**FREE FRESH Produce Pick Up For
All Glover Families
January 15th
Sign Up Now For Your FREE
Brighter Bites Fruits and
Veggies Bag!
Pick-Up: 2pm-4**

**Volunteers
Needed:
Volunteer Bagging
January 15th
10am- 12**

**Call Jade Claborn
281.634.0116
Jade.Claborn@
Fortbendis.gov**





Contact Your Parent Educator:
Jade Claborn
Jade.Claborn@fortbendisd.gov
281.634.0116

Glover Family Resource Center Calendar

January 2025

Weekly Practical Parent Education
Curriculum Module:


Monday

Tuesday

Wednesday

Thursday

Friday

 <div>Coffee and Chat Teams Q.R Code Meeting ID: 220 194 421 248 Passcode: SFSuur</div>		<div>Uplift Mentor Program Thursdays & Tuesdays 8-10 Room 101</div>	1	2	3
			Holiday/ No School		
PPE Curriculum Module 6.3 - Dealing with Stress in the Family	6 Family Center Closed No School	7 Family Center Closed No School	8 Family Center Closed By Appointment Only	9 Welcome Back Bash RSVP 8-10 Lunch and Learn Location: Café Time: 10:30-1:30 With PPE Lead Conversation	10 Craft and Chat Crochet Style/ Volunteer Hour Room 101 10-1 With PPE Lead Conversation
PPE Curriculum Module 6.3 - Dealing with Stress in the Family Mentoring Starts	13 Coffee and Chat 8:15- 9:30 (ONLINE ONLY) Lunch and Learn Location: Café Time: 10:30-1:30 With PPE Lead Conversation	14 Tech. Tuesdays 10-1 Microsoft Basics Skyward/ Schoology	15 Brighter Bites Volunteer Bagging: 10-12 Pickup: 2-4 Let's Get Healthy: Health and Wellness 12-12:30	16 Lunch and Learn Location: Café Time: 10:30-1:30 With PPE Lead Conversation	17 Craft and Chat Crochet Style/ Volunteer Hour Room 101 10-1 With PPE Lead Conversation
PPE Curriculum Module 2.1 - Developing and Maintaining Trusting Relationships within the Family	20 Family Center Closed No School	21 Tech. Tuesdays 10-1 Microsoft Basics Skyward/ Schoology Family Game Night 4-5:30	22 Family Center Closed By Appointment Only 5 TH Grade Parent Meeting Time: 5:00	23 Lunch and Learn Location: Café Time: 10:30-1:30 With PPE Lead Conversation	24 Craft and Chat Crochet Style/ Volunteer Hour Room 101 10-1 With PPE Lead Conversation
PPE Curriculum Module 2.1 - Developing and Maintaining Trusting Relationships within the Family	27 Coffee and Chat 8:15- 9:30 (ONLINE ONLY) Lunch and Learn Location: Café Time: 10:30-1:30 With PPE Lead Conversation	28 Tech. Tuesdays 10-1 Microsoft Basics Skyward/ Schoology Family Game Night 4-5:30	29 Brighter Bites Volunteer Bagging: 10-12 Pickup: 2-4 Let's Get Healthy: Health and Wellness 12-12:30	30 Bright Start: Preschool Age Info Time: 8:00-9:00 Location Room: 101 Lunch and Learn Location: Café Time: 10:30-1:30 With PPE Lead Conversation	31 Family Center Closed

Week At A Glance

Mondays: Coffee and Chat* 8:15-9:30
Lunch and Learn* 10:30-1

Tuesday: Technology Tuesday &
Family Game Night

Morning 10-1:30 and Afternoon 4:15-5:30
Please Register for Afternoon Tech Tuesdays

Wednesday: Brighter Bites & Lets get Healthy
(See Calendar For Specifics)

Thursday: Lunch and Learn

Friday: Craft and Chat*
Volunteer Hour

*Topic lead discussions will include information from the
Practical Parent Education Curriculum.



Feeling Strung Out?

The winter holidays are a joyous season. It is a time when families share treasured traditions, customs and beliefs with relatives and friends far and near. But quite often, our efforts to create the "perfect holiday" for our families result in undue stress on parents and children alike. And in the process, we tend to lose sight of what is truly important.

As we enter into the holiday season, reflect on those things which mean the most to your family.

Sit down as a family and rank in order those traditions and rituals which are most important and then focus on those this holiday season.

- enjoying family and friends
- exchanging gifts
- sharing with those less fortunate
- hosting or attending holiday festivities
- celebrating religious traditions and beliefs
- enjoying a few days off from job and school
- decorating the home
- enjoying special traditions
- baking and preparing holiday goodies
- making preparations for a new year
- other _____
- other _____



Parenting Quick Tips

© Practical Parent Education. All rights reserved.

January 9th



CONTACT YOUR PARENT EDUCATOR:

JADE CLABORN

JADE.CLABORN@FORTBENDISD.GOV

281.634.0116

WELCOME BACK BASH

Family Resource Center

Spring Reopening



VOLUNTEER TRAINING:

- Ensure all FBISD applications are up to date and turned in.
- Understand important district and campus policies.
- Learn important volunteer opportunities.
- Join the PTO information distribution list.

PPE TOPIC STRESS*:

- Test taking tips for STAAR Season
- Dealing with family stress
- Positives stressors versus negative stress

SELF CARE:

- Tips for daily care.
- Upcoming health and wellness courses.
- Brighter Bites info.

**RSVP For The
conversation and
light breakfast!**

RSVP Closes

December 20th

&

All RSVPS Will receive and
Email and Phone
Reminder.



*TOPICS WILL INCLUDE INFORMATION FROM THE
PRACTICAL PARENT EDUCATION CURRICULUM.

Eagle Bucks For
Guardian Attendance!

Coffee, Craft & Chat



Coffee and Chat

Bring Your Favorite Breakfast Beverage and Tune In For Your Weekly Dose of Self Care!



Where: Edgar Glover Jr. Elementary

Online Only

When: Monday @8:150am

Scan The Q.R Code and
Join the Teams Conversation



Meet Your

Parent Educators:



Phone:

(281)634.0116

Email:

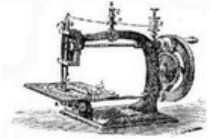
Jade.Claborn@fortbendisd.gov

Lets Crochet and Stich away the day!

Join the Family Center for a morning of learning
new skills and important family tips.



Craft and Chat



Where: Edgar Glover Jr. Elementary
Parent Center Room 101

When: Friday @10am

Topics will include information from the Practical Parent Education Curriculum.



Check Out Spring 2025 Workshop Online!



More of Mo City

What's Happening in Missouri City



Missouri City Parks & Recreation: Senior Programs



Active Adults 50+

[Check Out the Missouri City Webpage for Activities and Times.](#)



Farmers Market Partners Missouri City



**Click The Icon for
Upcoming Events**

FitExpo

Fit Expo

Kick-start those New Years Resolutions and get healthy in 2025. Explore different vendors and try a demo class.

- January 11, 2025
- 9:00 a.m. - 12:00 p.m.
- Recreation & Tennis Center
- FREE



*Happy
Holidays*



GLOVER ES PTO

The Glover PTO needs

YOU!

WHY JOIN THE PTO?



YOU BENEFIT

Volunteering your time, talents, and energy while socializing with other parents is fun, healthy and rewarding. Being able to contribute and make a positive impact is fulfilling!



OUR SCHOOL BENEFITS

Help create positive, caring and engaging community by supporting the scholars, teachers and administration!



OUR COMMUNITY BENEFITS

Teamwork makes the dream work! By working together we are able to have a positive impact in the world around us.

ANYONE CAN JOIN THE GLOVER PTO!

EMAIL EDGARGLOVERPTO@GMAIL.COM OR JOIN US FOR OUR MONTHLY MEETINGS.



Fort Bend ISD | Extended Learning

Extended Day Program

The Extended Day Program is for students in kindergarten through Grade 5, open before and after school to keep students safe and engaged.



Homework Time



SPARK Curriculum
and Clubs



Physical Activities

Before School

6:30 a.m. - 7:30 a.m.

After School

3:25 p.m. - 6:30 p.m.

Program Options:

Morning Only

Afternoons Only

Morning & Afternoon Combo

Tuition is paid monthly.

Early Dismissal Day and
Full Service Day child
care is available.

To register, go to
fortbendisd.reg.eleyo.com

ExtendedLearning@fortbendisd.com
fortbendisd.com/ExtendedLearning

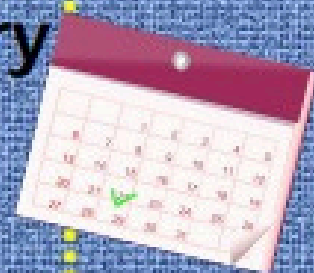




Glover Elementary

Attendance Matters!

Plan Ahead.



24-25 School Info

- School begins on Aug. 8 and ends May 29.
- School Hours - 8:05 am - 3:25 pm
- Students are marked tardy after 8:05 am and absent after 10:00 am.
- No Early Pickups after 3:00.

Student Breaks

Thanksgiving Break - Nov. 25-29

Winter Break - Dec. 23-Jan. 8

Spring Break - Mar. 10-14

Fall Student Holidays

*September 2

*September 27

*October 4

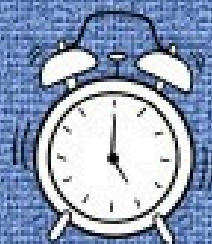
**October 10-15

*November 1

*November 11

*3-Day Weekend

**5-Day Weekend



Spring Student Holidays

*January 20

^February 14-17

*February 28

*March 31

^April 18-21

*May 26

*3-Day Weekend

^4-Day Weekend

Early Dismissal Days

September 26

December 20

February 13

May 29

Students Dismissed at 12:10 pm

We encourage scheduling trips and appointments during student holidays to help minimize preventable absences.



Eagle News

*THE MAGICAL WORLD OF
LEARNING*

12.2. 2024

Happy December! We have exciting activities planned at school this month. Please watch for details on our winter concert, holiday classroom events, and important end-of-semester dates. Remind your children to dress warmly as the weather cools. Thank you for your support, and we look forward to a joyful month ahead!

What's In This Week's Issue?

- Upcoming Events
- Firearm Injury Prevention
- MAP Testing Data Results
- FBISD Parent Resources Links
- Family Resource Center Updates
- Brighter Bites
- Family Tips From our Practical Parent Education Curriculum
- And much more...!

Upcoming Events:

Dec. 13th- Holiday Craft and Chat

Dec. 17th- A Holiday Of Music:
Winter Program

Dec. 18th- Brighter Bites

Dec. 20th- Early Dismissal

Dec. 23rd- Jan. 8th- No School Winter Break



Refer To The Student Handbook For Our cellphone policy:

Please ensure all cellphones are turned off and put away in the child's backpack.

SAFETY CONCERN

Please ensure NO STUDENT is picked up via Metro Lift or any other 3rd party transportation service. **Students must be picked up by a trusted adult from the skyward family list.**

Eagle Bucks For
Guardian Attendance!

December 13th



Holiday Craft and Chat



Gain insights from our Practical Parent Education curriculum to navigate holiday stress.

Discover strategies for maintaining balance and joy during this busy time. Whether you seek crafting inspiration or parenting tips, this event promises to be enriching and enjoyable. Don't miss out!

- Hot Cocoa Bar
- 2025 Spring Updates
- Holiday Resources

Join the Family Resource Center for festive crafts and connect with fellow parents this holiday season.

Time: 10-1

Location: Room 101

Contact Your Parent Educator:
Jade Claborn
Jade.Claborn@fortbendisd.gov
281.634.0116



The Magic Continues Online

Visit the [Parent and Family Center webpage](#) for:

- Event Information
- Family Courses
- Grade Level compacts
- Campus Policy
- Brighter Bites FREE Nutritional Packs
- And More!



FBISD Parent Links & Resources

- [Glover PTO Newsletter](#)
- [Volunteer Background Check](#)
- [GE Parent/Student Handbook](#)
- [Free and Reduced Lunch Application](#)
- [Parent Resources](#)
- [GE Twitter](#)
- [GE Website](#)
- [FBISD 24-25 Calendar](#)
- [Student Code Of Conduct](#)
- [GT Newsletter](#)
- [FBISD Express Newsletter](#)

If you're going to have lunch delivered for your child. Please notify your child's teacher and the front office at the beginning of the day.

You may also communicate the student's first initial and last name in the notes section to help us ensure a smooth transaction.

Contact Us

Principal Arana
clementine.arana@fortbendisd.gov

Assistant Principal Allen
carissa.allen@fortbendisd.gov

Parent Educator Jade Claborn
Jade.Claborn@fortbendisd.gov

12 days of Disney Magic

Countdown to Winter Break



GLOVER ELEMENTARY

12-5

SANTA MICKEY'S HELPERS- WEAR
GREEN OR RED ELF OUTFITS



12-6

HUNDRED ACRE HOLIDAY -
WEAR FLANNEL, PLAID, & SCARVES
DASHING THROUGH THE BAYOU-
WEAR GREENS, GOLDS, & PURPLE

12-9

12-10

HERO VS. VILLAIN HOLIDAY TAKEOVER -
WEAR HERO OR VILLAIN HOLIDAY ATTIRE

12-11

WARM WISHES FROM ARENDELLE-
WEAR WARM UPS

12-12

PIXIE DUST & PEPPERMINTS - WEAR
RED/GREEN WHITE STRIPES

12-13

FROZEN FRIDAY - WEAR ICY
BLUE OR WHITE

12-16

MERRY MICKEY MONDAY- MICKEY
MOUSE OR DISNEY HOLIDAY GEAR

12-17

TIS THE SEASON OF MAGIC -
FESTIVE HOLIDAY ATTIRE

12-18

A VERY GOOFY HOLIDAY-
WEAR UGLY SWEATERS

12-19

TINKER BELL'S TWINKLING HOLIDAY-
WEAR LIGHTS, SPARKLE

12-20

ONCE UPON A DREAM - WEAR PJS





Firearm Injury Prevention Education for Parents

Gun violence has become an urgent public health epidemic in the United States, with firearms accounting for more and more fatalities among children and teens each year. At Memorial Hermann, we are committed to our vision of creating healthier communities, now and for generations to come, but we cannot accomplish our vision

without doing all we can to reduce gun violence and its impact on our patients and community—especially the children and teens who are at an increasingly high risk for death, injury or suicide by firearm. Below, our injury prevention experts share general information about firearm safety, best practices for firearm storage and the steps you can take to protect your family from firearm injury.

Types of Firearm Injury

Children are at an increasing risk of death by firearms through unintentional shootings, suicide and assault. Unintentional firearm injury often occurs when a younger child finds a firearm and accidentally shoots themselves, a playmate or a sibling. Suicide often occurs in children ages 10 and older, and assaults more often occur among adolescents and young adults.

Safe Storage

Storing firearms in a safe and secure manner is the best method for preventing firearm injury. Through safe storage, you can reduce the risk of unintentional injury by limiting opportunities for young children to access firearms. Because suicide among children and teens is often impulsive, proper storage provides a barrier of protection and an opportunity for intervention. By locking away your firearms, you also reduce the risk of them being stolen or used in an assault or homicide. To properly store your firearms, experts recommend the following:

- All firearms should be stored unloaded in a lockbox or safe. Ammunition should also be locked up in a separate location.
- Place cable locks on firearms to provide an added layer of safety. (Note: A firearm can still be loaded with a trigger lock in place, so cable locks are recommended as they can only be secured on unloaded firearms.)
- Some experts recommend storing firearms in a safe location outside the home for additional security when a higher risk individual is present—for example, a family member with depression or a high level of stress.

Communication is Key

Children as young as 22 months old are capable of pulling a trigger, and many children cannot differentiate between a real firearm and a toy. It is critical that parents talk to their children about what to do if they ever encounter a firearm at home, at a friend's house or in public. Children should never handle a firearm without an adult present, and if a child ever encounters a firearm, they should not touch it and should immediately go to an adult for help. We also recommend asking about firearm storage in the homes of your children's friends as well as those of family members or neighbors. The [American Academy of Pediatrics](#) recommends adding the question, "Is there an unlocked gun in your house?" to a typical playdate checklist, which might also include concerns about allergies, pets or plans for supervision.

Education

If you personally own a firearm, register everyone in your family for firearm safety classes, which offer age-appropriate education on safe handling, proper use and storage. This is an important step for a responsible firearm owner and can go a long way to preventing unintentional injury or improper firearm use. Still, nothing replaces safe storage, so even families with extensive knowledge and training should keep their firearms and ammunition separate and locked away.

Educación para los padres de familia sobre la prevención de lesiones por armas de fuego

La violencia por armas de fuego se ha convertido en una epidemia urgente de salud pública en los Estados Unidos ya que estas causan cada vez más muertes entre niños y adolescentes cada año. En Memorial Hermann, estamos comprometidos con nuestra visión de crear comunidades más saludables, ahora y para las generaciones venideras. No podremos lograr este objetivo sin hacer todo lo posible para reducir la violencia por armas y su impacto en nuestros pacientes y la comunidad, especialmente los niños y adolescentes. Ellos corren un riesgo cada vez mayor de muerte, lesiones o suicidio. A continuación, nuestros especialistas en prevención de lesiones comparten información general sobre medidas de seguridad de las armas de fuego, las mejores prácticas para su almacenamiento y los pasos que puede seguir para proteger a su familia.

Tipos de lesiones por arma de fuego

Los niños corren un riesgo cada vez mayor de morir por armas de fuego a través de disparos no intencionales, suicidio y asalto. Las lesiones no intencionales a menudo ocurren cuando un niño más pequeño encuentra un arma y accidentalmente se dispara a sí mismo, a un compañero o a un hermano. Frecuentemente, el suicidio ocurre en niños de 10 años o mayores, y las agresiones ocurren con mayor frecuencia entre adolescentes y adultos jóvenes.

Almacenamiento seguro

Almacenar armas de fuego de manera segura y protegida es el mejor método para prevenir lesiones. A través del almacenamiento seguro, se puede reducir el riesgo de lesiones no intencionales al limitar las oportunidades para que los niños pequeños accedan a las armas de fuego. Debido a que el suicidio entre niños y adolescentes es a menudo impulsivo, el almacenamiento adecuado proporciona una barrera de protección y una oportunidad para la intervención. Al colocar dispositivos de seguridad como es el bloqueo del gatillo en las armas de fuego, también se reduce el riesgo de que sean robadas o utilizadas en un asalto u homicidio. Para guardar adecuadamente sus armas de fuego, se recomienda lo siguiente:

- Todas las armas deben almacenarse descargadas en una caja de seguridad o caja fuerte.
- Las municiones también deben estar encerradas en un lugar separado.
- Coloque cerraduras de cable en las armas de fuego para proporcionar una capa adicional de seguridad. (Nota: Un arma de fuego aún se puede cargar con un bloqueo de gatillo, por lo que se recomiendan bloqueos de cable, ya que solo se pueden asegurar en armas descargadas).
- Algunos expertos recomiendan almacenarlas en un lugar seguro fuera del hogar para mayor seguridad cuando una persona de mayor riesgo está presente, por ejemplo, un miembro de la familia con depresión o con un alto nivel de estrés.

La comunicación es clave

Los niños de tan solo 22 meses de edad son capaces de apretar un gatillo, y muchos niños no pueden diferenciar entre un arma de fuego real y un juguete. Es fundamental que los padres hablen con sus hijos sobre qué hacer si alguna vez se encuentran con un arma de fuego en casa, en la casa de un amigo o en lugares públicos. Los niños nunca deben manejar armas en ausencia de un adulto, y si un niño alguna vez se encuentra una, no debe tocarla y debe acudir inmediatamente a un adulto en busca de ayuda.

También recomendamos preguntar sobre el almacenamiento de armas de fuego en las casas de los amigos de sus hijos, así como en las de los miembros de la familia o los vecinos. [La Academia Americana de Pediatría](#) recomienda agregar la pregunta: "¿Posee un arma desbloqueada en su casa?" a una lista de preguntas típicas para un día de juego, que también podría incluir preguntas sobre alergias, mascotas o planes de supervisión.

Educación

Si usted personalmente posee un arma de fuego, registre a todos en su familia para las clases de seguridad, las cuales ofrecen educación apropiada de acuerdo a la edad sobre manejo seguro, uso adecuado y almacenamiento. Este es un paso importante para un propietario responsable y en la prevención de lesiones no intencionales o el uso inadecuado de armas. Aún así, nada reemplaza el almacenamiento seguro, por lo que incluso las familias con amplios conocimientos y capacitación deben mantener sus armas de fuego y municiones fuera del alcance de los menores.

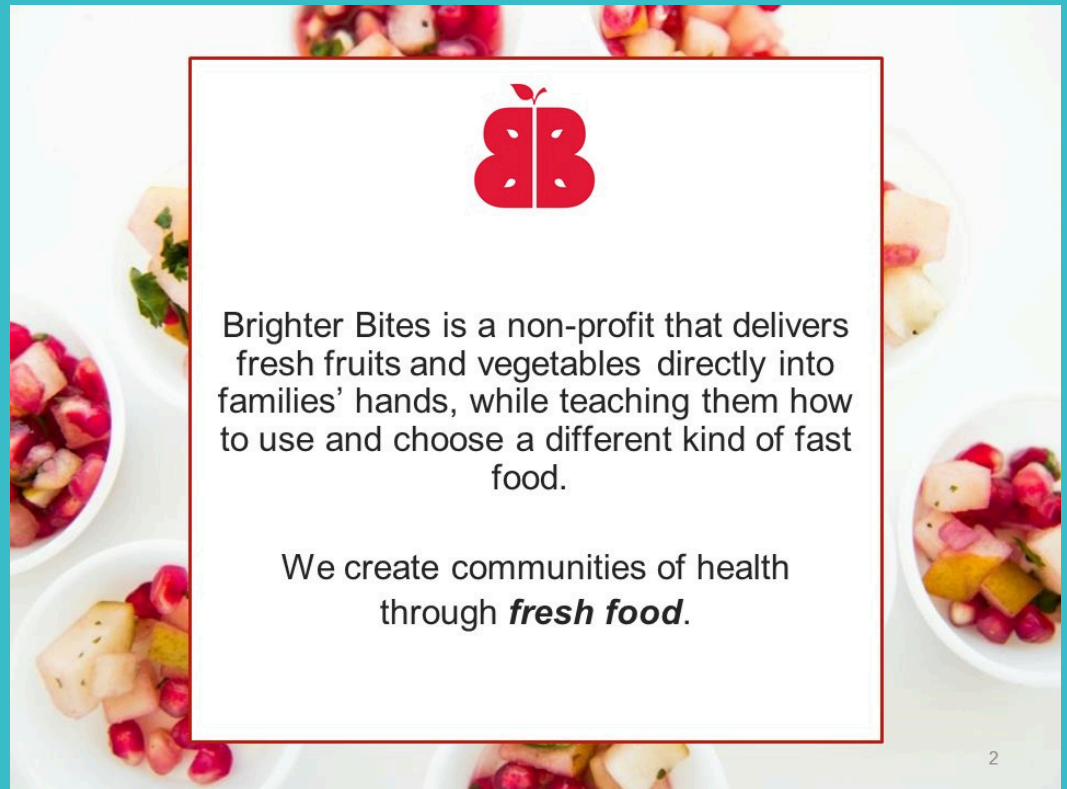




**FREE FRESH Produce Pick Up For
All Glover Families
December 18th
Sign Up Now For Your FREE
Brighter Bites Fruits and
Veggies Bag!
Pick-Up: 2pm-4**

**Volunteers
Needed:
Volunteer Bagging
December 18th
10am- 12**

**Call Jade Claborn
281.634.0116
Jade.Claborn@
Fortbendisd.gov**



January 9th



CONTACT YOUR PARENT EDUCATOR:

JADE CLABORN

JADE.CLABORN@FORTBENDISD.GOV

281.634.0116

WELCOME BACK BASH

Family Resource Center

Spring Reopening



VOLUNTEER TRAINING:

- Ensure all FBISD applications are up to date and turned in.
- Understand important district and campus policies.
- Learn important volunteer opportunities.
- Join the PTO information distribution list.

PPE TOPIC STRESS*:

- Test taking tips for STAAR Season
- Dealing with family stress
- Positives stressors versus negative stress

SELF CARE:

- Tips for daily care.
- Upcoming health and wellness courses.
- Brighter Bites info.

**RSVP For The
conversation and
light breakfast!**

RSVP Closes

December 20th

&

All RSVPS Will receive and
Email and Phone
Reminder.



*TOPICS WILL INCLUDE INFORMATION FROM THE
PRACTICAL PARENT EDUCATION CURRICULUM.

Eagle Bucks For
Guardian Attendance!



Contact Your Parent Educator:
Jade Claborn
Jade.Claborn@fortbendisd.gov
281.634.0116

Glover Family Resource Center Calendar

December 2024

Weekly Practical Parent Education
Curriculum Module:

	Monday	Tuesday	Wednesday	Thursday	Friday
PPE Curriculum Module 3.2 - Developing Digital Responsibility	2 Family Center Closed By Appointment Only	3 Lunch and Learn Location: Café Time: 10:30-1:30 With PPE Lead Conversation	4 Brighter Bites Volunteered Bagging: 10-12 Pickup: 2:00-4	5 Family Center Closed By Appointment Only	6 Craft and Chat With Crochet Room 101/ Volunteer Hour 10-1 With PPE Lead Conversation
PPE Curriculum Module 3.2 - Developing Digital Responsibility	9 Lunch and Learn Location: Café Time: 10:30-1:30 With PPE Lead Conversation	10 Last Mentor Session Lunch and Learn Location: Café Time: 10:30-1:30 With PPE Lead Conversation	11 Family Center Closed By Appointment Only	12 Family Center Closed By Appointment Only	13 Craft and Chat Holiday Crafts Room 101 10-1 With PPE Lead Conversation
PPE Curriculum Module 4.5 - Helping Children Learn to Make Healthy Choices	16 Lunch and Learn Location: Café Time: 10:30-1:30 With PPE Lead Conversation	17 Lunch and Learn Location: Café Time: 10:30-1:30 With PPE Lead Conversation Winter Program	18 Brighter Bites Volunteered Bagging: 10-12 Pickup: 2:00-4	19 Family Center Closed By Appointment Only	20 Family Center Closed Appointment Only Early Dismissal 12:10
	23	24	25	26	27
	Holiday/ No School				
	30				
	Holiday/ No School				



The Family Center is taking video and email testimonials! Please share your experience and how the Family Resource Center has benefited you and your family.

Week At A Glance

Mondays: Coffee and Chat* 8:15-9:30
Lunch and Learn* 10:30-1

Tuesday: Technology Tuesday

Morning 10-1:30 and Afternoon 4:15-5:30
Please Register for Afternoon Tech Tuesdays

Wednesday: Brighter Bites (See Calendar For Specifics)

Thursday: Lunch and Learn

Friday: Craft and Chat*
Volunteer Hour

*Topic lead discussions will include information from the Practical Parent Education Curriculum.



The winter holidays are a joyous season. It is a time when families share treasured traditions, customs and beliefs with relatives and friends far and near. But quite often, our efforts to create the "perfect holiday" for our families result in undue stress on parents and children alike. And in the process, we tend to lose sight of what is truly important.

As we enter into the holiday season, reflect on those things which mean the most to your family.

Sit down as a family and rank in order those traditions and rituals which are most important and then focus on those this holiday season.

- enjoying family and friends
- exchanging gifts
- sharing with those less fortunate
- hosting or attending holiday festivities
- celebrating religious traditions and beliefs
- enjoying a few days off from job and school
- decorating the home
- enjoying special traditions
- baking and preparing holiday goodies
- making preparations for a new year
- other _____
- other _____



Parenting Quick Tips

© Practical Parent Education. All rights reserved.

Coffee, Craft & Chat



Coffee and Chat

Bring Your Favorite Breakfast Beverage and Tune In For Your Weekly Dose of Self Care!



Where: Edgar Glover Jr. Elementary

Online Only

When: Monday @8:150am

Scan The Q.R Code and
Join the Teams Conversation



Meet Your

Parent Educators:



Phone:

(281)634.0116

Email:

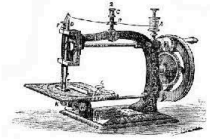
Jade.Claborn@fortbendisd.gov

Lets Crochet and Stich away the day!

Join the Family Center for a morning of learning
new skills and important family tips.



Craft and Chat



Where: Edgar Glover Jr. Elementary
Parent Center Room 101

When: Friday @10am

Topics will include information from the Practical Parent Education Curriculum.



Spring Family courses Coming Soon!



Retake Picture Day for Edgar Glover Jr Elementary School is scheduled for 12/10/2024.

<https://inter-state.com/FlyerEntry/92164N>

Who takes a fall retake?

- Any Student who is newly enrolled in the school after your original picture day
- Any Student returning their package for any reason and wanting to Retake their picture
- Any Student who was absent on the original Picture Day
- Any Student who did not purchase on Picture Day that has a payment/online receipt for the purchase
- If you have any questions or need further assistance, please feel free to reach out.

More of Mo City What's Happening in Missouri City



Missouri City Parks & Recreation: Senior Programs

Active Adults 50+

Check Out the Missouri City Webpage for
Activities and Times.



Farmers Market Partners Missouri City

 **FORT BEND COUNTY
LIBRARIES**
Enriching Lives & Expanding Minds

**Click The Icon for
Upcoming Events**





The Family Learning Connection

Uniting Families, Educators, & the Community

Vol. 21 Second Quarter

THE ANNUAL TITLE I, PART A MEETING FOR PARENTS

Each Title I, Part A campus is required by law to host a Title I, Part A Meeting. This is a chance for parents to find out about federal money that helps support their child's education. At the meeting, families will learn how this money is used and how they can help with planning and making decisions. Make sure to ask your school about the Title I, Part A Meeting.

BULLYING

Bullying can hurt kids emotionally and affect their schoolwork and mental health. To find resources and strategies to prevent bullying and create a safe school environment, visit the Texas School Safety Center's website <http://r16.us/txssc-bullying>.



ANNUAL PARENT & FAMILY ENGAGEMENT STATEWIDE CONFERENCE

The 2024 Parent and Family Engagement (PFE) Statewide Conference in Houston was a big success! Educators and families from all over Texas came together to learn and work together. We are happy to share that the 2025 PFE Statewide Conference will be in Waco, Texas, from October 15-17, 2025. Save the date and keep an eye on our website for more details: www.pfetexas.net.



Follow for more great information:





MALE ROLE MODELS

Fathers play an important role in a child's life, offering guidance, support, and love that help shape who they become. Children who may not have an active father figure often look up to other trusted role models – such as a mom, uncle, coach, pastor, or cousin – who provide that same positive influence. Male role models play an important role in children's growth. When male-figures are involved, it can lead to better feelings, school performance, and social skills. Engaged male role models help build strong, positive relationships that benefit children's health, behavior, and future success. This impact lasts throughout childhood and into adulthood, even if these male role models do not live with their kids. You can read more about this here: <http://r16.us/fatherhoodproject>.

HIGH SCHOOL CORNER

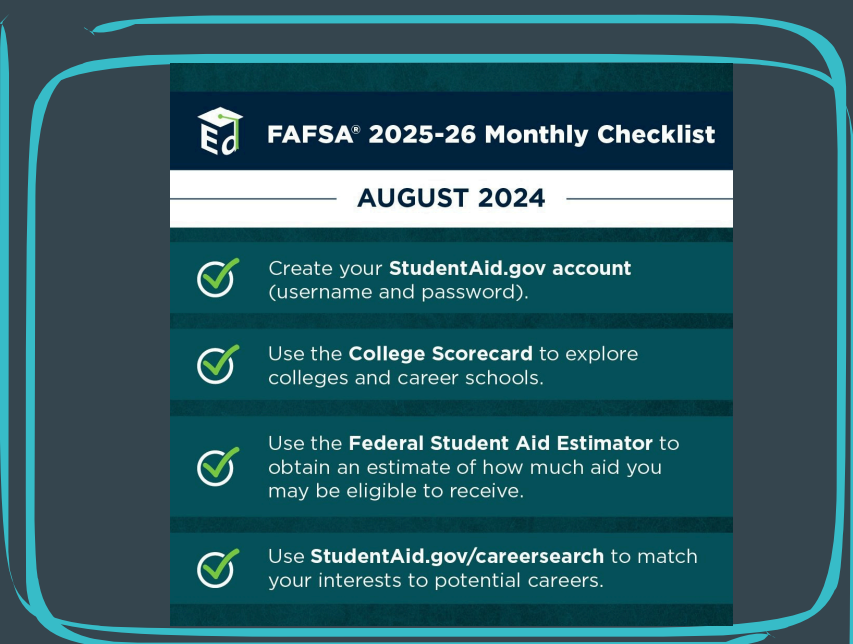
The U.S. Department of Education wants high school students to get ready for college. They can explore resources on the Federal Student Aid website. For more information, visit www.studentaid.gov.

GROWING UNDERSTANDING

Schools should give parents tools to help them understand state standards and tests. They should also provide guidance on how to keep track of your child's school progress. Schools can offer materials and training to help you support your child's success at home. Ask your school about what resources they have for you.

ATTENDANCE

Regular school attendance is very important for students to do well in school. Missing school, even in middle school, can lead to problems later, like dropping out. Families can help by making sure kids go to school every day, creating routines and keeping in touch with the school. This support helps children succeed in their education. You can find more information at <http://r16.us/attendance>.



Follow for more great information:



Your Family Might Be Missing Out Academically!

**School
starts at
8:05 a.m.**

Arriving to school late and leaving early could set your child at an academic disadvantage.

- Just 20 Minutes could lead to your child being behind in any of the core subjects.
- 30 Minutes late or early could lead to your child missing certain learning TEKS (this may be a Science or Social Studies lesson). Leading Too...
 - Lack of academic motivation
 - Issues retaining information from previously lessons
 - Disrupting the learning process
 - Poor Academic Performance

The habits you build with your student now will help your child in intermediate school, high school, and later in their career.

How Can You help?

- Set up a good night routine.
 - Set out clothes for the next day.
 - Read before bed and limit screen time.
 - Utilize rewards for following the bedtime weekly or monthly.
- Have an “Exit” plan and try to stick to it every morning.
- Refrain from picking up your child early from school unless absolutely necessary.



Remember your child needs you to be successful!



**School
dismissal is
at
3:25 p.m.**



GLOVER ES PTO

The Glover PTO needs

YOU!

WHY JOIN THE PTO?



YOU BENEFIT

Volunteering your time, talents, and energy while socializing with other parents is fun, healthy and rewarding. Being able to contribute and make a positive impact is fulfilling!



OUR SCHOOL BENEFITS

Help create positive, caring and engaging community by supporting the scholars, teachers and administration!



OUR COMMUNITY BENEFITS

Teamwork makes the dream work! By working together we are able to have a positive impact in the world around us.

ANYONE CAN JOIN THE GLOVER PTO!

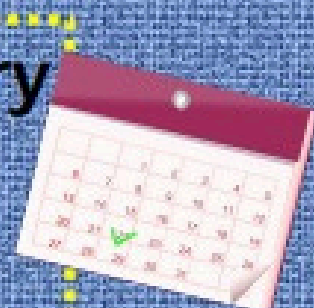
EMAIL EDGARGLOVERPTO@GMAIL.COM OR JOIN US FOR OUR MONTHLY MEETINGS.



Glover Elementary

Attendance Matters!

Plan Ahead.



24-25 School Info

- School begins on Aug. 8 and ends May 29.
- School Hours - 8:05 am - 3:25 pm
- Students are marked tardy after 8:05 am and absent after 10:00 am.
- No Early Pickups after 3:00.

Student Breaks

Thanksgiving Break - Nov. 25-29

Winter Break - Dec. 23-Jan. 8

Spring Break - Mar. 10-14

Fall Student Holidays

*September 2

*September 27

*October 4

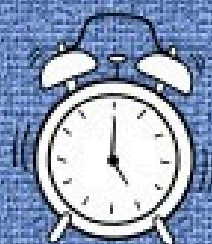
**October 10-15

*November 1

*November 11

*3-Day Weekend

**5-Day Weekend



Spring Student Holidays

*January 20

^February 14-17

*February 28

*March 31

^April 18-21

*May 26

*3-Day Weekend

^4-Day Weekend

Early Dismissal Days

September 26

December 20

February 13

May 29

Students Dismissed at 12:10 pm

We encourage scheduling trips and appointments during student holidays to help minimize preventable absences.



Fort Bend ISD | Extended Learning

Extended Day Program

The Extended Day Program is for students in kindergarten through Grade 5, open before and after school to keep students safe and engaged.



Homework Time



SPARK Curriculum
and Clubs



Physical Activities

Before School

6:30 a.m. - 7:30 a.m.

After School

3:25 p.m. - 6:30 p.m.

Program Options:

Morning Only

Afternoons Only

Morning & Afternoon Combo

Tuition is paid monthly.

Early Dismissal Day and
Full Service Day child
care is available.

To register, go to
fortbendisd.reg.eleyo.com

ExtendedLearning@fortbendisd.com
fortbendisd.com/ExtendedLearning





Eagle News

THE MAGICAL WORLD OF LEARNING

12.12. 2024

We have finished another weekend and embarking on our last week of the Fall semester. As we near the end of the semester, we want to thank you for your support during this successful term! Grades will be posted by **December 20th**, so please encourage your student to complete any missing assignments and exhibit positive behavior as we finish strong.

We're excited to invite you to our Winter Program on December 17th at 5:30 PM, where our K-2 students will perform "A Holiday of Music." We hope to see you there to celebrate their hard work and talent!

With many activities planned next week, we look forward to seeing our students engaged and participating. Let's end this semester on a high note and enjoy a much-needed winter break afterward!

Upcoming Events:

Dec. 17th- A Holiday Of Music:
Winter Program 5:30

Dec. 18th- Brighter Bites

Dec. 18th- 3rd Field Trip

Dec. 19th - Holiday Photos & Winter Wonderland
Dance

Dec. 20th- Early Dismissal

Dec. 23rd- Jan. 8th- No School Winter Break

What's In This Week's Issue?

- Upcoming Events
- A Holiday of Music
- Winter Program
- FBISD Parent Resources Links
- Family Resource Center Updates
- Winter Wonderland Dance
- Brighter Bites
- Family Tips From our Practical Parent Education Curriculum
- And much more...!

SAFETY CONCERN

Please ensure NO STUDENT is picked up via Metro Lift or any other 3rd party transportation service. **Students must be picked up by a trusted adult from the skyward family list.**



Refer To The Student Handbook For Our cellphone policy:

Please ensure all cellphones are turned off and put away in the child's backpack.

The Magic Continues Online

Visit the [Parent and Family Center webpage](#) for:

- Event Information
- Family Courses
- Grade Level compacts
- Campus Policy
- Brighter Bites FREE Nutritional Packs
- And More!



FBISD Parent Links & Resources

- [Glover PTO Newsletter](#)
- [Volunteer Background Check](#)
- [GE Parent/Student Handbook](#)
- [Free and Reduced Lunch Application](#)
- [Parent Resources](#)
- [GE Twitter](#)
- [GE Website](#)
- [FBISD 24-25 Calendar](#)
- [Student Code Of Conduct](#)
- [GT Newsletter](#)
- [FBISD Express Newsletter](#)

If you're going to have lunch delivered for your child. Please notify your child's teacher and the front office at the beginning of the day.

You may also communicate the student's first initial and last name in the notes section to help us ensure a smooth transaction.

Contact Us

Principal Arana
clementine.arana@fortbendisd.gov

Assistant Principal Allen
carissa.allen@fortbendisd.gov

Parent Educator Jade Claborn
Jade.Claborn@fortbendisd.gov

12 days of Disney Magic

Countdown to Winter Break



GLOVER ELEMENTARY

12-5

SANTA MICKEY'S HELPERS- WEAR
GREEN OR RED ELF OUTFITS



12-6

HUNDRED ACRE HOLIDAY -
WEAR FLANNEL, PLAID, & SCARVES
DASHING THROUGH THE BAYOU-
WEAR GREENS, GOLDS, & PURPLE

12-9

12-10

HERO VS. VILLAIN HOLIDAY TAKEOVER -
WEAR HERO OR VILLAIN HOLIDAY ATTIRE

12-11

WARM WISHES FROM ARENDELLE-
WEAR WARM UPS

12-12

PIXIE DUST & PEPPERMINTS - WEAR
RED/GREEN WHITE STRIPES

12-13

FROZEN FRIDAY - WEAR ICY
BLUE OR WHITE

12-16

MERRY MICKEY MONDAY- MICKEY
MOUSE OR DISNEY HOLIDAY GEAR

12-17

TIS THE SEASON OF MAGIC -
FESTIVE HOLIDAY ATTIRE

12-18

A VERY GOOFY HOLIDAY-
WEAR UGLY SWEATERS

12-19

TINKER BELL'S TWINKLING HOLIDAY-
WEAR LIGHTS, SPARKLE

12-20

ONCE UPON A DREAM - WEAR PJS





JOIN US!



A Holiday Of Music

WINTER PROGRAM

17 DEC / 5:30 PM

**1510 COLUMBIA BLUE DR,
MISSOURI CITY, TX 77489**

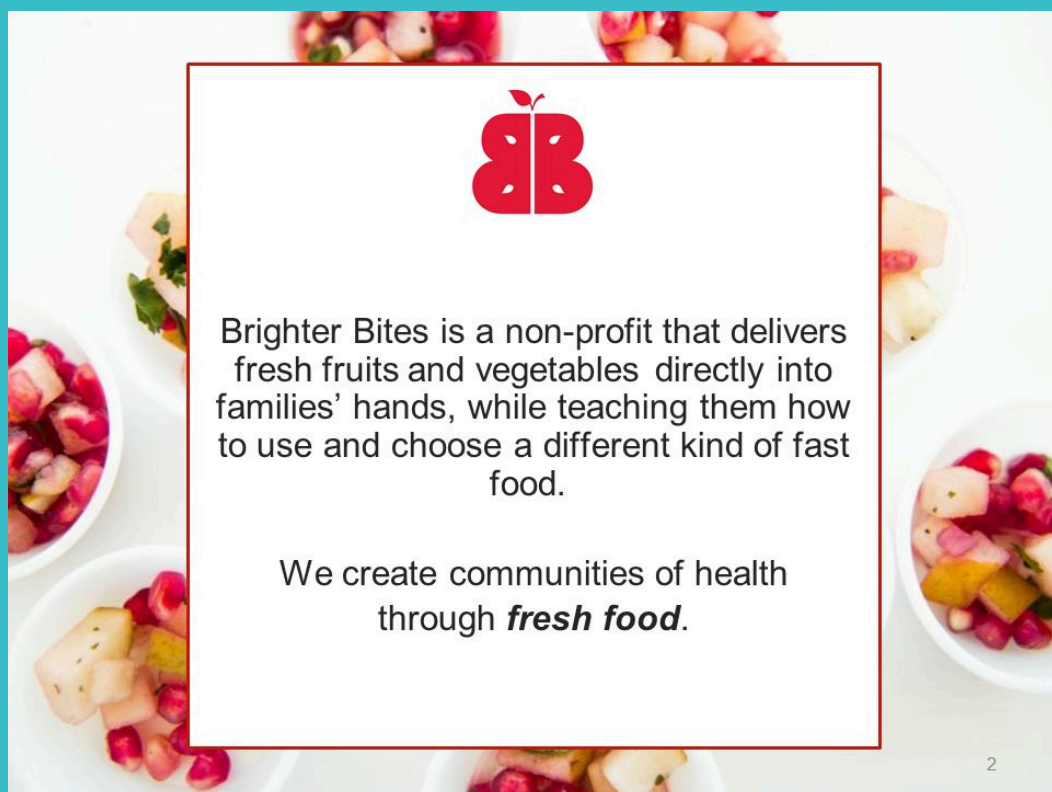




**FREE FRESH Produce Pick Up For
All Glover Families
December 18th
Sign Up Now For Your FREE
Brighter Bites Fruits and
Veggies Bag!
Pick-Up: 2pm-4**

**Volunteers
Needed:
Volunteer Bagging
December 18th
10am- 12**

**Call Jade Claborn
281.634.0116
Jade.Claborn@
Fortbendisd.gov**



GLOVER ELEMENTARY

Holiday Photos

SANTA & THE GRINCH

Special holiday guests will be stopping by Glover. For \$5, students can take a holiday photo with Santa or The Grinch.

THURSDAY

**19
DEC**

8:30 TO 11:00

Name: _____

Teacher: _____

Parent name: _____

Contact #: _____

Spirit Squad Presents:


Glovers Winter Dance!

Get ready to celebrate the season at the Winter Dance, hosted by the Spirit Squad!

 **When: Thursday, December 19th**


 **Time: 1:45 PM - 3:00 PM**

 **Where: The Cafeteria**

 **Admission: \$3 per person-Money due to your teacher by December 18th**

Tickets Available for purchase the day of

 **\$1 Snacks: Available for purchase**

 **Photo Fun: Capture the memories with your friends! Get 2 Polaroid pictures for just \$1.**





Contact Your Parent Educator:
Jade Claborn
Jade.Claborn@fortbendisd.gov
281.634.0116

Glover Family Resource Center Calendar

December 2024

Weekly Practical Parent Education
Curriculum Module:

	Monday	Tuesday	Wednesday	Thursday	Friday
PPE Curriculum Module 3.2 - Developing Digital Responsibility	2 Family Center Closed By Appointment Only	3 Lunch and Learn Location: Café Time: 10:30-1:30 With PPE Lead Conversation	4 Brighter Bites Volunteered Bagging: 10-12 Pickup: 2:00-4	5 Family Center Closed By Appointment Only	6 Craft and Chat With Crochet Room 101/ Volunteer Hour 10-1 With PPE Lead Conversation
PPE Curriculum Module 3.2 - Developing Digital Responsibility	9 Lunch and Learn Location: Café Time: 10:30-1:30 With PPE Lead Conversation	10 Last Mentor Session Lunch and Learn Location: Café Time: 10:30-1:30 With PPE Lead Conversation	11 Family Center Closed By Appointment Only	12 Family Center Closed By Appointment Only	13 Craft and Chat Holiday Crafts Room 101 10-1 With PPE Lead Conversation
PPE Curriculum Module 4.5 - Helping Children Learn to Make Healthy Choices	16 Lunch and Learn Location: Café Time: 10:30-1:30 With PPE Lead Conversation	17 Lunch and Learn Location: Café Time: 10:30-1:30 With PPE Lead Conversation Winter Program	18 Brighter Bites Volunteered Bagging: 10-12 Pickup: 2:00-4	19 Family Center Closed By Appointment Only	20 Family Center Closed Appointment Only Early Dismissal 12:10
	23	24	25	26	27
	Holiday/ No School				
	30				
	Holiday/ No School				



The Family Center is taking video and email testimonials! Please share your experience and how the Family Resource Center has benefited you and your family.

Week At A Glance

Mondays: Coffee and Chat* 8:15-9:30
Lunch and Learn* 10:30-1

Tuesday: Technology Tuesday

Morning 10-1:30 and Afternoon 4:15-5:30
Please Register for Afternoon Tech Tuesdays

Wednesday: Brighter Bites (See Calendar For Specifics)

Thursday: Lunch and Learn

Friday: Craft and Chat*
Volunteer Hour

*Topic lead discussions will include information from the Practical Parent Education Curriculum.



The winter holidays are a joyous season. It is a time when families share treasured traditions, customs and beliefs with relatives and friends far and near. But quite often, our efforts to create the "perfect holiday" for our families result in undue stress on parents and children alike. And in the process, we tend to lose sight of what is truly important.

As we enter into the holiday season, reflect on those things which mean the most to your family.

Sit down as a family and rank in order those traditions and rituals which are most important and then focus on those this holiday season.

- enjoying family and friends
- exchanging gifts
- sharing with those less fortunate
- hosting or attending holiday festivities
- celebrating religious traditions and beliefs
- enjoying a few days off from job and school
- decorating the home
- enjoying special traditions
- baking and preparing holiday goodies
- making preparations for a new year
- other _____
- other _____



Parenting Quick Tips

© Practical Parent Education. All rights reserved.

January 9th



CONTACT YOUR PARENT EDUCATOR:

JADE CLABORN

JADE.CLABORN@FORTBENDISD.GOV

281.634.0116

WELCOME BACK BASH

Family Resource Center

Spring Reopening



VOLUNTEER TRAINING:

- Ensure all FBISD applications are up to date and turned in.
- Understand important district and campus policies.
- Learn important volunteer opportunities.
- Join the PTO information distribution list.

PPE TOPIC STRESS*:

- Test taking tips for STAAR Season
- Dealing with family stress
- Positives stressors versus negative stress

SELF CARE:

- Tips for daily care.
- Upcoming health and wellness courses.
- Brighter Bites info.

**RSVP For The
conversation and
light breakfast!**

RSVP Closes
December 20th

&

All RSVPS Will receive and
Email and Phone
Reminder.



*TOPICS WILL INCLUDE INFORMATION FROM THE
PRACTICAL PARENT EDUCATION CURRICULUM.

Eagle Bucks For
Guardian Attendance!

Coffee, Craft & Chat



Coffee and Chat

Bring Your Favorite Breakfast Beverage and Tune In For Your Weekly Dose of Self Care!



Where: Edgar Glover Jr. Elementary

Online Only

When: Monday @8:150am

Scan The Q.R Code and
Join the Teams Conversation



Meet Your

Parent Educators:



Phone:

(281)634.0116

Email:

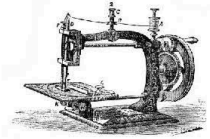
Jade.Claborn@fortbendisd.gov

Lets Crochet and Stich away the day!

Join the Family Center for a morning of learning
new skills and important family tips.



Craft and Chat



Where: Edgar Glover Jr. Elementary
Parent Center Room 101

When: Friday @10am

Topics will include information from the Practical Parent Education Curriculum.



Spring Family courses Coming Soon!





Glover Eagle Spirit Squad took 1st place at the Fall UIL Invitational on Dec. 6th



Glover's CODA program performed at The Landmark Community Center on Dec. 11th.

Our 2nd grade students attended BalletForte's The Nutcracker on Dec. 13th



More of Mo City

What's Happening in Missouri City



Missouri City Parks & Recreation: Senior Programs



Active Adults 50+

Check Out the [Missouri City Webpage](#) for Activities and Times.



Farmers Market Partners
Missouri City



FORT BEND COUNTY
LIBRARIES
Enriching Lives & Expanding Minds

**Click The Icon for
Upcoming Events**



The Family Learning Connection

Uniting Families, Educators, & the Community

Vol. 21 Second Quarter

THE ANNUAL TITLE I, PART A MEETING FOR PARENTS

Each Title I, Part A campus is required by law to host a Title I, Part A Meeting. This is a chance for parents to find out about federal money that helps support their child's education. At the meeting, families will learn how this money is used and how they can help with planning and making decisions. Make sure to ask your school about the Title I, Part A Meeting.

BULLYING

Bullying can hurt kids emotionally and affect their schoolwork and mental health. To find resources and strategies to prevent bullying and create a safe school environment, visit the Texas School Safety Center's website <http://r16.us/txssc-bullying>.



ANNUAL PARENT & FAMILY ENGAGEMENT STATEWIDE CONFERENCE

The 2024 Parent and Family Engagement (PFE) Statewide Conference in Houston was a big success! Educators and families from all over Texas came together to learn and work together. We are happy to share that the 2025 PFE Statewide Conference will be in Waco, Texas, from October 15-17, 2025. Save the date and keep an eye on our website for more details: www.pfetexas.net.



Follow for more great information:





MALE ROLE MODELS

Fathers play an important role in a child's life, offering guidance, support, and love that help shape who they become. Children who may not have an active father figure often look up to other trusted role models – such as a mom, uncle, coach, pastor, or cousin – who provide that same positive influence. Male role models play an important role in children's growth. When male-figures are involved, it can lead to better feelings, school performance, and social skills. Engaged male role models help build strong, positive relationships that benefit children's health, behavior, and future success. This impact lasts throughout childhood and into adulthood, even if these male role models do not live with their kids. You can read more about this here: <http://r16.us/fatherhoodproject>.

HIGH SCHOOL CORNER

The U.S. Department of Education wants high school students to get ready for college. They can explore resources on the Federal Student Aid website. For more information, visit www.studentaid.gov.

GROWING UNDERSTANDING

Schools should give parents tools to help them understand state standards and tests. They should also provide guidance on how to keep track of your child's school progress. Schools can offer materials and training to help you support your child's success at home. Ask your school about what resources they have for you.

ATTENDANCE

Regular school attendance is very important for students to do well in school. Missing school, even in middle school, can lead to problems later, like dropping out. Families can help by making sure kids go to school every day, creating routines and keeping in touch with the school. This support helps children succeed in their education. You can find more information at <http://r16.us/attendance>.



FAFSA® 2025-26 Monthly Checklist

AUGUST 2024



Create your **StudentAid.gov** account (username and password).



Use the **College Scorecard** to explore colleges and career schools.



Use the **Federal Student Aid Estimator** to obtain an estimate of how much aid you may be eligible to receive.



Use **StudentAid.gov/careersearch** to match your interests to potential careers.

Follow for more great information:



Your Family Might Be Missing Out Academically!

**School
starts at
8:05 a.m.**

Arriving to school late and leaving early could set your child at an academic disadvantage.

- Just 20 Minutes could lead to your child being behind in any of the core subjects.
- 30 Minutes late or early could lead to your child missing certain learning TEKS (this may be a Science or Social Studies lesson). Leading Too...
 - Lack of academic motivation
 - Issues retaining information from previously lessons
 - Disrupting the learning process
 - Poor Academic Performance

The habits you build with your student now will help your child in intermediate school, high school, and later in their career.

How Can You help?

- Set up a good night routine.
 - Set out clothes for the next day.
 - Read before bed and limit screen time.
 - Utilize rewards for following the bedtime weekly or monthly.
- Have an “Exit” plan and try to stick to it every morning.
- Refrain from picking up your child early from school unless absolutely necessary.



Remember your child needs you to be successful!



**School
dismissal is
at
3:25 p.m.**



GLOVER ES PTO

The Glover PTO needs

YOU!

WHY JOIN THE PTO?



YOU BENEFIT

Volunteering your time, talents, and energy while socializing with other parents is fun, healthy and rewarding. Being able to contribute and make a positive impact is fulfilling!



OUR SCHOOL BENEFITS

Help create positive, caring and engaging community by supporting the scholars, teachers and administration!



OUR COMMUNITY BENEFITS

Teamwork makes the dream work! By working together we are able to have a positive impact in the world around us.

ANYONE CAN JOIN THE GLOVER PTO!

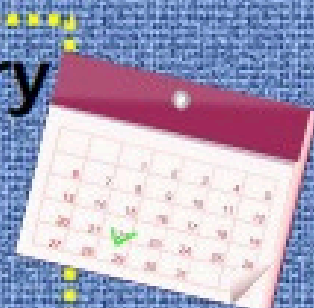
EMAIL EDGARGLOVERPTO@GMAIL.COM OR JOIN US FOR OUR MONTHLY MEETINGS.



Glover Elementary

Attendance Matters!

Plan Ahead.



24-25 School Info

- School begins on Aug. 8 and ends May 29.
- School Hours - 8:05 am - 3:25 pm
- Students are marked tardy after 8:05 am and absent after 10:00 am.
- No Early Pickups after 3:00.

Student Breaks

Thanksgiving Break - Nov. 25-29

Winter Break - Dec. 23-Jan. 8

Spring Break - Mar. 10-14

Fall Student Holidays

*September 2

*September 27

*October 4

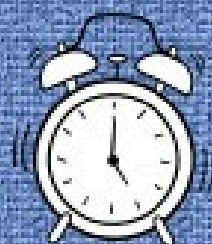
**October 10-15

*November 1

*November 11

*3-Day Weekend

**5-Day Weekend



Spring Student Holidays

*January 20

^February 14-17

*February 28

*March 31

^April 18-21

*May 26

*3-Day Weekend

^4-Day Weekend

Early Dismissal Days

September 26

December 20

February 13

May 29

Students Dismissed at 12:10 pm

We encourage scheduling trips and appointments during student holidays to help minimize preventable absences.

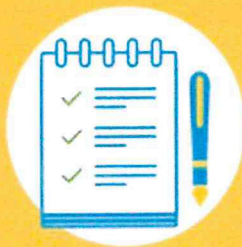
Healthcare Enrollment

In-Person & Virtual Event!

Certified health navigators will be available to **assist** with applying for the **Marketplace, Medicaid, & CHIP!**



Compare health plans



Understand your
benefit options



Select the qualified
health plans that best
meet your needs.

Saturday, December 14th

9 am-4 pm

Visit:

Houston Food Bank
535 Portwall St
Houston, Texas 77029
to meet with a navigator



or Call:

(713) 574-5646
**to set up a virtual
appointment**

*You just need to bring your ID.

Deadline to begin coverage on January 1 is December 15!



Fort Bend ISD | Extended Learning

Extended Day Program

The Extended Day Program is for students in kindergarten through Grade 5, open before and after school to keep students safe and engaged.



Homework Time



SPARK Curriculum
and Clubs



Physical Activities

Before School

6:30 a.m. - 7:30 a.m.

After School

3:25 p.m. - 6:30 p.m.

Program Options:

Morning Only

Afternoons Only

Morning & Afternoon Combo

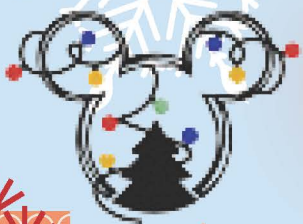
Tuition is paid monthly.

Early Dismissal Day and
Full Service Day child
care is available.

To register, go to
fortbendisd.reg.eleyo.com

ExtendedLearning@fortbendisd.com
fortbendisd.com/ExtendedLearning





12 Days of Disney Magic

Countdown to Winter Break



Week of Dec. 9th - 13th adjusted
dress days

9 Dashing through the Bayou

Dress in greens, purples, and golds, channeling Tiana or the bayou creatures with holiday charm.



10 Frozen Winter Wonderland

Dress in icy blues, whites, or sparkly outfits

Class Photo Day



11 Warm Wishes from Arendelle

Cozy vibes, icy magic, and plenty of holiday cheer.



Warm ups



12 Pixie Dust & Peppermints

Rock candy cane-inspired outfits with red/green and white stripes for a day full of sparkle, sweetness, and holiday cheer.



13 Heroes vs. Villains Holiday Takeover

It's a festive showdown! Dress as your favorite Disney hero or villain with a holiday twist. Will you save the season or stir up some mischief?





Eagle News

THE MAGICAL WORLD OF LEARNING

12.12. 2024

We have finished another weekend and embarking on our last week of the Fall semester. As we near the end of the semester, we want to thank you for your support during this successful term! Grades will be posted by **December 20th**, so please encourage your student to complete any missing assignments and exhibit positive behavior as we finish strong.

We're excited to invite you to our Winter Program on December 17th at 5:30 PM, where our K-2 students will perform "A Holiday of Music." We hope to see you there to celebrate their hard work and talent!

With many activities planned next week, we look forward to seeing our students engaged and participating. Let's end this semester on a high note and enjoy a much-needed winter break afterward!

Upcoming Events:

Dec. 17th- A Holiday Of Music:
Winter Program 5:30

Dec. 18th- Brighter Bites

Dec. 18th- 3rd Field Trip

Dec. 19th - Holiday Photos & Winter Wonderland
Dance

Dec. 20th- Early Dismissal

Dec. 23rd- Jan. 8th- No School Winter Break

What's In This Week's Issue?

- Upcoming Events
- A Holiday of Music
- Winter Program
- FBISD Parent Resources Links
- Family Resource Center Updates
- Winter Wonderland Dance
- Brighter Bites
- Family Tips From our Practical Parent Education Curriculum
- And much more...!

SAFETY CONCERN

Please ensure NO STUDENT is picked up via Metro Lift or any other 3rd party transportation service. **Students must be picked up by a trusted adult from the skyward family list.**



Refer To The Student Handbook For Our cellphone policy:

Please ensure all cellphones are turned off and put away in the child's backpack.

The Magic Continues Online

Visit the [Parent and Family Center webpage](#) for:

- Event Information
- Family Courses
- Grade Level compacts
- Campus Policy
- Brighter Bites FREE Nutritional Packs
- And More!



FBISD Parent Links & Resources

- [Glover PTO Newsletter](#)
- [Volunteer Background Check](#)
- [GE Parent/Student Handbook](#)
- [Free and Reduced Lunch Application](#)
- [Parent Resources](#)
- [GE Twitter](#)
- [GE Website](#)
- [FBISD 24-25 Calendar](#)
- [Student Code Of Conduct](#)
- [GT Newsletter](#)
- [FBISD Express Newsletter](#)

If you're going to have lunch delivered for your child. Please notify your child's teacher and the front office at the beginning of the day.

You may also communicate the student's first initial and last name in the notes section to help us ensure a smooth transaction.

Contact Us

Principal Arana
clementine.arana@fortbendisd.gov

Assistant Principal Allen
carissa.allen@fortbendisd.gov

Parent Educator Jade Claborn
Jade.Claborn@fortbendisd.gov

12 days of Disney Magic

Countdown to Winter Break



GLOVER ELEMENTARY

12-5

SANTA MICKEY'S HELPERS- WEAR
GREEN OR RED ELF OUTFITS



12-6

HUNDRED ACRE HOLIDAY -
WEAR FLANNEL, PLAID, & SCARVES
DASHING THROUGH THE BAYOU-
WEAR GREENS, GOLDS, & PURPLE

12-9

12-10

HERO VS. VILLAIN HOLIDAY TAKEOVER -
WEAR HERO OR VILLAIN HOLIDAY ATTIRE

12-11

WARM WISHES FROM ARENDELLE-
WEAR WARM UPS

12-12

PIXIE DUST & PEPPERMINTS - WEAR
RED/GREEN WHITE STRIPES

12-13

FROZEN FRIDAY - WEAR ICY
BLUE OR WHITE

12-16

MERRY MICKEY MONDAY- MICKEY
MOUSE OR DISNEY HOLIDAY GEAR

12-17

TIS THE SEASON OF MAGIC -
FESTIVE HOLIDAY ATTIRE

12-18

A VERY GOOFY HOLIDAY-
WEAR UGLY SWEATERS

12-19

TINKER BELL'S TWINKLING HOLIDAY-
WEAR LIGHTS, SPARKLE

12-20

ONCE UPON A DREAM - WEAR PJS





JOIN US!



A Holiday Of Music

WINTER PROGRAM

17 DEC / 5:30 PM

**1510 COLUMBIA BLUE DR,
MISSOURI CITY, TX 77489**

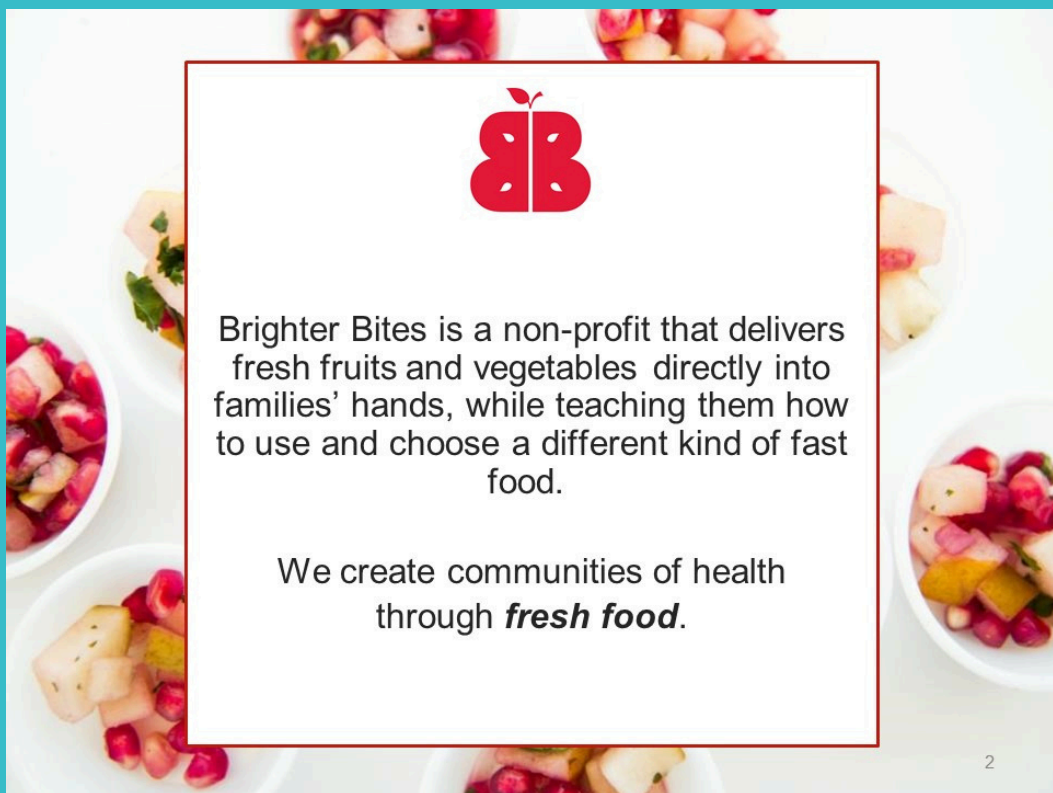




**FREE FRESH Produce Pick Up For
All Glover Families
December 18th
Sign Up Now For Your FREE
Brighter Bites Fruits and
Veggies Bag!
Pick-Up: 2pm-4**

**Volunteers
Needed:
Volunteer Bagging
December 18th
10am- 12**

**Call Jade Claborn
281.634.0116
Jade.Claborn@
Fortbendisd.gov**



GLOVER ELEMENTARY

Holiday Photos

SANTA & THE GRINCH

Special holiday guests will be stopping by Glover. For \$5, students can take a holiday photo with Santa or The Grinch.

THURSDAY

**19
DEC**

8:30 TO 11:00

Name: _____

Teacher: _____

Parent name: _____

Contact #: _____

Spirit Squad Presents:


Glovers Winter Dance!

Get ready to celebrate the season at the Winter Dance, hosted by the Spirit Squad!

 **When: Thursday, December 19th**


 **Time: 1:45 PM - 3:00 PM**

 **Where: The Cafeteria**

 **Admission: \$3 per person-Money due to your teacher by December 18th**

Tickets Available for purchase the day of

 **\$1 Snacks: Available for purchase**

 **Photo Fun: Capture the memories with your friends! Get 2 Polaroid pictures for just \$1.**





Contact Your Parent Educator:
Jade Claborn
Jade.Claborn@fortbendisd.gov
281.634.0116

Glover Family Resource Center Calendar

December 2024

Weekly Practical Parent Education
Curriculum Module:

	Monday	Tuesday	Wednesday	Thursday	Friday
PPE Curriculum Module 3.2 - Developing Digital Responsibility	2 Family Center Closed By Appointment Only	3 Lunch and Learn Location: Café Time: 10:30-1:30 With PPE Lead Conversation	4 Brighter Bites Volunteered Bagging: 10-12 Pickup: 2:00-4	5 Family Center Closed By Appointment Only	6 Craft and Chat With Crochet Room 101/ Volunteer Hour 10-1 With PPE Lead Conversation
PPE Curriculum Module 3.2 - Developing Digital Responsibility	9 Lunch and Learn Location: Café Time: 10:30-1:30 With PPE Lead Conversation	10 Last Mentor Session Lunch and Learn Location: Café Time: 10:30-1:30 With PPE Lead Conversation	11 Family Center Closed By Appointment Only	12 Family Center Closed By Appointment Only	13 Craft and Chat Holiday Crafts Room 101 10-1 With PPE Lead Conversation
PPE Curriculum Module 4.5 - Helping Children Learn to Make Healthy Choices	16 Lunch and Learn Location: Café Time: 10:30-1:30 With PPE Lead Conversation	17 Lunch and Learn Location: Café Time: 10:30-1:30 With PPE Lead Conversation Winter Program	18 Brighter Bites Volunteered Bagging: 10-12 Pickup: 2:00-4	19 Family Center Closed By Appointment Only	20 Family Center Closed Appointment Only Early Dismissal 12:10
	23	24	25	26	27
	Holiday/ No School				
	30				
	Holiday/ No School				



The Family Center is taking video and email testimonials! Please share your experience and how the Family Resource Center has benefited you and your family.

Week At A Glance

Mondays: Coffee and Chat* 8:15-9:30
Lunch and Learn* 10:30-1

Tuesday: Technology Tuesday

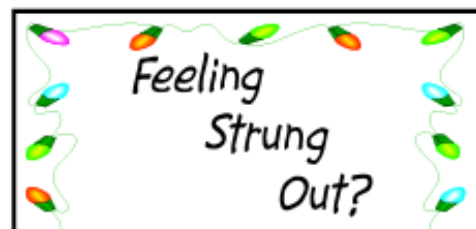
Morning 10-1:30 and Afternoon 4:15-5:30
Please Register for Afternoon Tech Tuesdays

Wednesday: Brighter Bites (See Calendar For Specifics)

Thursday: Lunch and Learn

Friday: Craft and Chat*
Volunteer Hour

*Topic lead discussions will include information from the Practical Parent Education Curriculum.



The winter holidays are a joyous season. It is a time when families share treasured traditions, customs and beliefs with relatives and friends far and near. But quite often, our efforts to create the "perfect holiday" for our families result in undue stress on parents and children alike. And in the process, we tend to lose sight of what is truly important.

As we enter into the holiday season, reflect on those things which mean the most to your family.

Sit down as a family and rank in order those traditions and rituals which are most important and then focus on those this holiday season.

- enjoying family and friends
- exchanging gifts
- sharing with those less fortunate
- hosting or attending holiday festivities
- celebrating religious traditions and beliefs
- enjoying a few days off from job and school
- decorating the home
- enjoying special traditions
- baking and preparing holiday goodies
- making preparations for a new year
- other _____
- other _____



Parenting Quick Tips

© Practical Parent Education. All rights reserved.

January 9th



CONTACT YOUR PARENT EDUCATOR:

JADE CLABORN

JADE.CLABORN@FORTBENDISD.GOV

281.634.0116

WELCOME BACK BASH

Family Resource Center

Spring Reopening



VOLUNTEER TRAINING:

- Ensure all FBISD applications are up to date and turned in.
- Understand important district and campus policies.
- Learn important volunteer opportunities.
- Join the PTO information distribution list.

PPE TOPIC STRESS*:

- Test taking tips for STAAR Season
- Dealing with family stress
- Positives stressors versus negative stress

SELF CARE:

- Tips for daily care.
- Upcoming health and wellness courses.
- Brighter Bites info.

**RSVP For The
conversation and
light breakfast!**

RSVP Closes
December 20th

&

All RSVPS Will receive and
Email and Phone
Reminder.



*TOPICS WILL INCLUDE INFORMATION FROM THE
PRACTICAL PARENT EDUCATION CURRICULUM.

Eagle Bucks For
Guardian Attendance!

Coffee, Craft & Chat



Coffee and Chat

Bring Your Favorite Breakfast Beverage and Tune In For Your Weekly Dose of Self Care!



Where: Edgar Glover Jr. Elementary

Online Only

When: Monday @8:150am

Scan The Q.R Code and
Join the Teams Conversation



Meet Your

Parent Educators:



Phone:

(281)634.0116

Email:

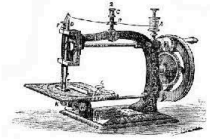
Jade.Claborn@fortbendisd.gov

Lets Crochet and Stich away the day!

Join the Family Center for a morning of learning
new skills and important family tips.



Craft and Chat



Where: Edgar Glover Jr. Elementary
Parent Center Room 101

When: Friday @10am

Topics will include information from the Practical Parent Education Curriculum.



Spring Family courses Coming Soon!



More of Mo City

What's Happening in Missouri City



Active Adults 50+

[Check Out the Missouri City Webpage for Activities and Times.](#)



Farmers Market Partners

Missouri City



 **FORT BEND COUNTY
LIBRARIES**
Enriching Lives & Expanding Minds

**Click The Icon for
Upcoming Events**



The Family Learning Connection

Uniting Families, Educators, & the Community

Vol. 21 Second Quarter

THE ANNUAL TITLE I, PART A MEETING FOR PARENTS

Each Title I, Part A campus is required by law to host a Title I, Part A Meeting. This is a chance for parents to find out about federal money that helps support their child's education. At the meeting, families will learn how this money is used and how they can help with planning and making decisions. Make sure to ask your school about the Title I, Part A Meeting.

BULLYING

Bullying can hurt kids emotionally and affect their schoolwork and mental health. To find resources and strategies to prevent bullying and create a safe school environment, visit the Texas School Safety Center's website <http://r16.us/txssc-bullying>.



ANNUAL PARENT & FAMILY ENGAGEMENT STATEWIDE CONFERENCE

The 2024 Parent and Family Engagement (PFE) Statewide Conference in Houston was a big success! Educators and families from all over Texas came together to learn and work together. We are happy to share that the 2025 PFE Statewide Conference will be in Waco, Texas, from October 15-17, 2025. Save the date and keep an eye on our website for more details: www.pfetexas.net.



Follow for more great information:





MALE ROLE MODELS

Fathers play an important role in a child's life, offering guidance, support, and love that help shape who they become. Children who may not have an active father figure often look up to other trusted role models – such as a mom, uncle, coach, pastor, or cousin – who provide that same positive influence. Male role models play an important role in children's growth. When male-figures are involved, it can lead to better feelings, school performance, and social skills. Engaged male role models help build strong, positive relationships that benefit children's health, behavior, and future success. This impact lasts throughout childhood and into adulthood, even if these male role models do not live with their kids. You can read more about this here: <http://r16.us/fatherhoodproject>.

HIGH SCHOOL CORNER

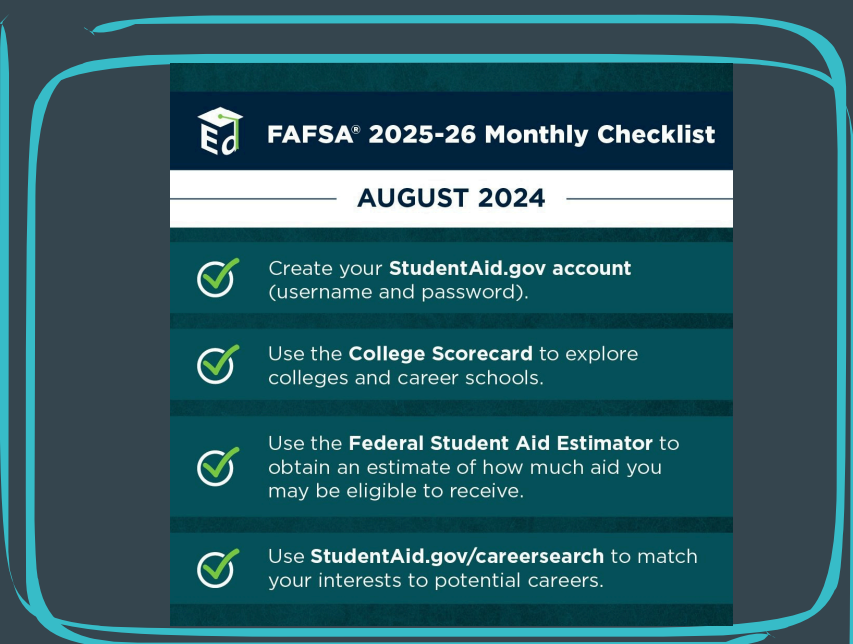
The U.S. Department of Education wants high school students to get ready for college. They can explore resources on the Federal Student Aid website. For more information, visit www.studentaid.gov.

GROWING UNDERSTANDING

Schools should give parents tools to help them understand state standards and tests. They should also provide guidance on how to keep track of your child's school progress. Schools can offer materials and training to help you support your child's success at home. Ask your school about what resources they have for you.

ATTENDANCE

Regular school attendance is very important for students to do well in school. Missing school, even in middle school, can lead to problems later, like dropping out. Families can help by making sure kids go to school every day, creating routines and keeping in touch with the school. This support helps children succeed in their education. You can find more information at <http://r16.us/attendance>.



Follow for more great information:



Your Family Might Be Missing Out Academically!

**School
starts at
8:05 a.m.**

Arriving to school late and leaving early could set your child at an academic disadvantage.

- Just 20 Minutes could lead to your child being behind in any of the core subjects.
- 30 Minutes late or early could lead to your child missing certain learning TEKS (this may be a Science or Social Studies lesson). Leading Too...
 - Lack of academic motivation
 - Issues retaining information from previously lessons
 - Disrupting the learning process
 - Poor Academic Performance

The habits you build with your student now will help your child in intermediate school, high school, and later in their career.

How Can You help?

- Set up a good night routine.
 - Set out clothes for the next day.
 - Read before bed and limit screen time.
 - Utilize rewards for following the bedtime weekly or monthly.
- Have an “Exit” plan and try to stick to it every morning.
- Refrain from picking up your child early from school unless absolutely necessary.



Remember your child needs you to be successful!



**School
dismissal is
at
3:25 p.m.**



GLOVER ES PTO

The Glover PTO needs

YOU!

WHY JOIN THE PTO?



YOU BENEFIT

Volunteering your time, talents, and energy while socializing with other parents is fun, healthy and rewarding. Being able to contribute and make a positive impact is fulfilling!



OUR SCHOOL BENEFITS

Help create positive, caring and engaging community by supporting the scholars, teachers and administration!



OUR COMMUNITY BENEFITS

Teamwork makes the dream work! By working together we are able to have a positive impact in the world around us.

ANYONE CAN JOIN THE GLOVER PTO!

EMAIL EDGARGLOVERPTO@GMAIL.COM OR JOIN US FOR OUR MONTHLY MEETINGS.



Glover Elementary

Attendance Matters!

Plan Ahead.



24-25 School Info

- School begins on Aug. 8 and ends May 29.
- School Hours - 8:05 am - 3:25 pm
- Students are marked tardy after 8:05 am and absent after 10:00 am.
- No Early Pickups after 3:00.

Student Breaks

Thanksgiving Break - Nov. 25-29

Winter Break - Dec. 23-Jan. 8

Spring Break - Mar. 10-14

Fall Student Holidays

*September 2

*September 27

*October 4

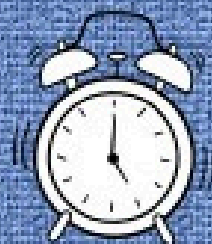
**October 10-15

*November 1

*November 11

*3-Day Weekend

**5-Day Weekend



Spring Student Holidays

*January 20

^February 14-17

*February 28

*March 31

^April 18-21

*May 26

*3-Day Weekend

^4-Day Weekend

Early Dismissal Days

September 26

December 20

February 13

May 29

Students Dismissed at 12:10 pm

We encourage scheduling trips and appointments during student holidays to help minimize preventable absences.

Healthcare Enrollment

In-Person & Virtual Event!

Certified health navigators will be available to **assist** with applying for the **Marketplace, Medicaid, & CHIP!**



Compare health plans



Understand your
benefit options



Select the qualified
health plans that best
meet your needs.

Saturday, December 14th

9 am-4 pm

Visit:

Houston Food Bank
535 Portwall St
Houston, Texas 77029
to meet with a navigator



or Call:

(713) 574-5646
**to set up a virtual
appointment**

*You just need to bring your ID.

Deadline to begin coverage on January 1 is December 15!



Fort Bend ISD | Extended Learning

Extended Day Program

The Extended Day Program is for students in kindergarten through Grade 5, open before and after school to keep students safe and engaged.



Homework Time



SPARK Curriculum
and Clubs



Physical Activities

Before School

6:30 a.m. - 7:30 a.m.

After School

3:25 p.m. - 6:30 p.m.

Program Options:

Morning Only

Afternoons Only

Morning & Afternoon Combo

Tuition is paid monthly.

Early Dismissal Day and
Full Service Day child
care is available.

To register, go to
fortbendisd.reg.eleyo.com

ExtendedLearning@fortbendisd.com
fortbendisd.com/ExtendedLearning

